

Ongoing LTEM Re-Evaluation

November 2018

Progress to Date



Interested parties round table



Experts round table



Rutgers review & report



Socrata exploration ongoing

Re-Evaluation Steps Needed

Nov 2018

- Evaluate Rutgers recommendations for expanded economic indicators in detail

June 2019

- Set “final” Variables List, Reporting Frequency & Presentation Format (e.g., Socrata)

(FY20)

- Staff review & recommendation on special study

Rutgers Recommendations

- Geography
- Reporting Frequency
- Variables or Indicators

Staff Concerns

Level of Effort vs. Ideal

- Staffing: additional data & processing time
- NPS contract: continued funding for FY 19 = \$298,500 total, +/- 50% to Economic Monitoring
- Learning curve: new reporting mechanism and in-house process
- All changes are additive for tasks, except Fact Book which would be replaced by Socrata
- Pinelands/ Non-Pinelands regional comparison

Staff Recommendations

- Geography
- Reporting Frequency
- Variables

Staff Recommended Geography

Retain
current
geographies

- **Municipal Fact Book**
- **Pinelands Region**
- **Southern New Jersey**
- **State**
- **Concur with Rutgers**

Staff Recommendations on Report Frequency

Update Report variables on rolling basis

- After processed and reviewed in-house
- Presented through interactive web-based tool
- Change variables/ Add variables?

Annual Executive Summary or Data Brief

- Regional comparisons
- Selected variable highlighted
- Regional comparisons

Staff Recommendations on Report Variables

Four Actions on Variables

- **Existing (23)**
- **Add (7)**
- **Research (7)**
- **Deferred (16)**

Staff Recommendation on Reported Variables

Category Character	# of Variables Proposed	# Existing Variables	# Variables to Add	# Variables to Research	# Variables Deferred
Commercial Variables*	2	0	1	1	0
Economy & Employment Variables	13	9	1	0	3
Economic Development Variables	2	0	0	0	2
Municipal Finance Variables	7	5	0	1	1
Infrastructure Variables	3	0	0	0	3
Land Variables*	4	0	2	0	2
Population Variables	7	5	1	0	1
Preserved Land Variables	3	1	2	0	0
Quality of Life Variables	1	0	0	1	0
Residential & Housing Variables	9	3	0	2	4
Tourism Variables	2	0	0	2	0
Totals	53	23	7	7	16

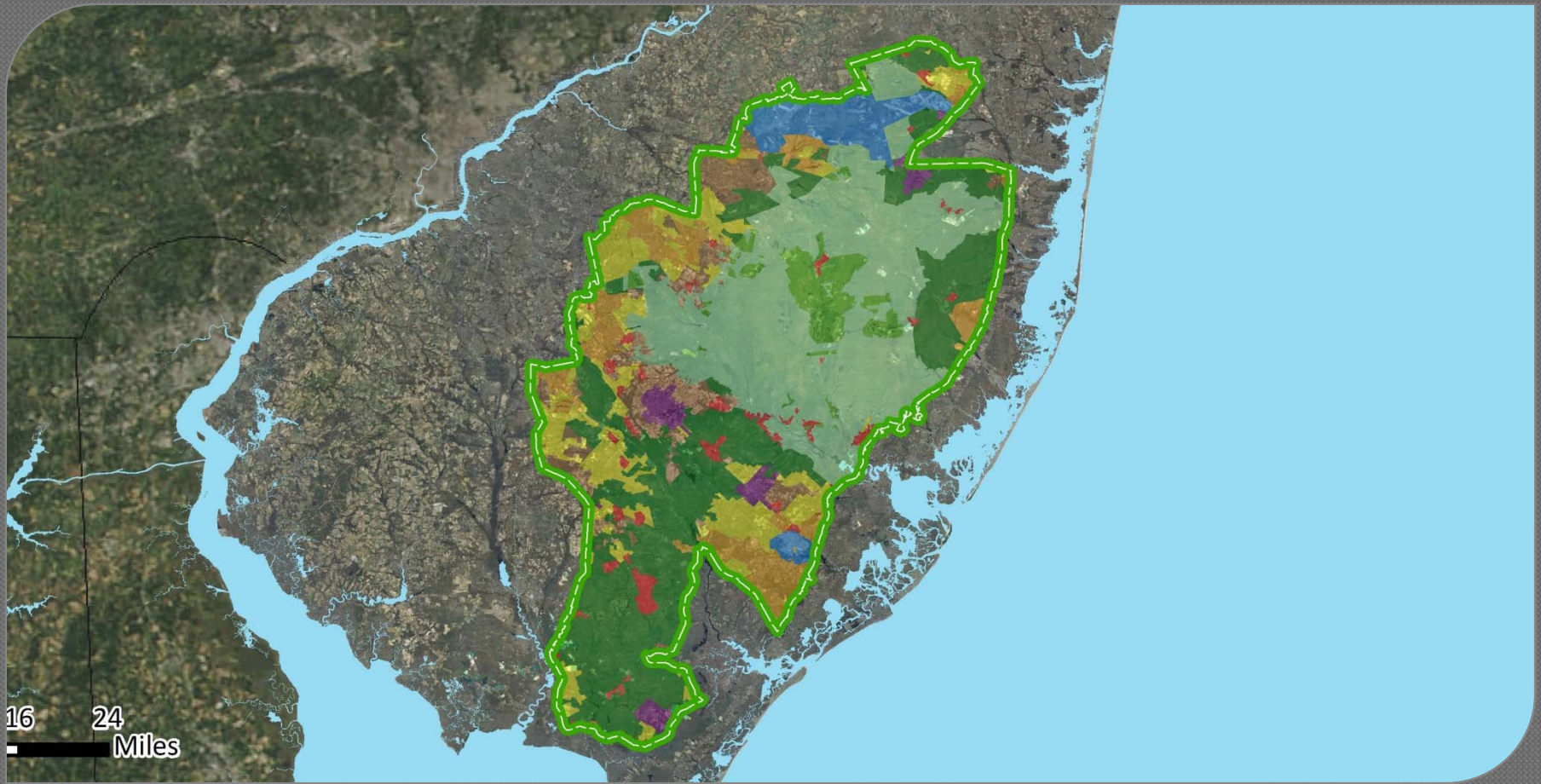
Staff Recommendation for Special Study

Consider panel
& other
suggestions

Select and
conduct

Work Plan Timeframe

- Hire New analyst : January
- Socrata (or ESRI): February/March
- Introduce new web-based “Fact Book”:
March - April
- Ongoing research on re-evaluation
variables: January - June
- Selection of Special Study area: next
summer/fall



Questions?